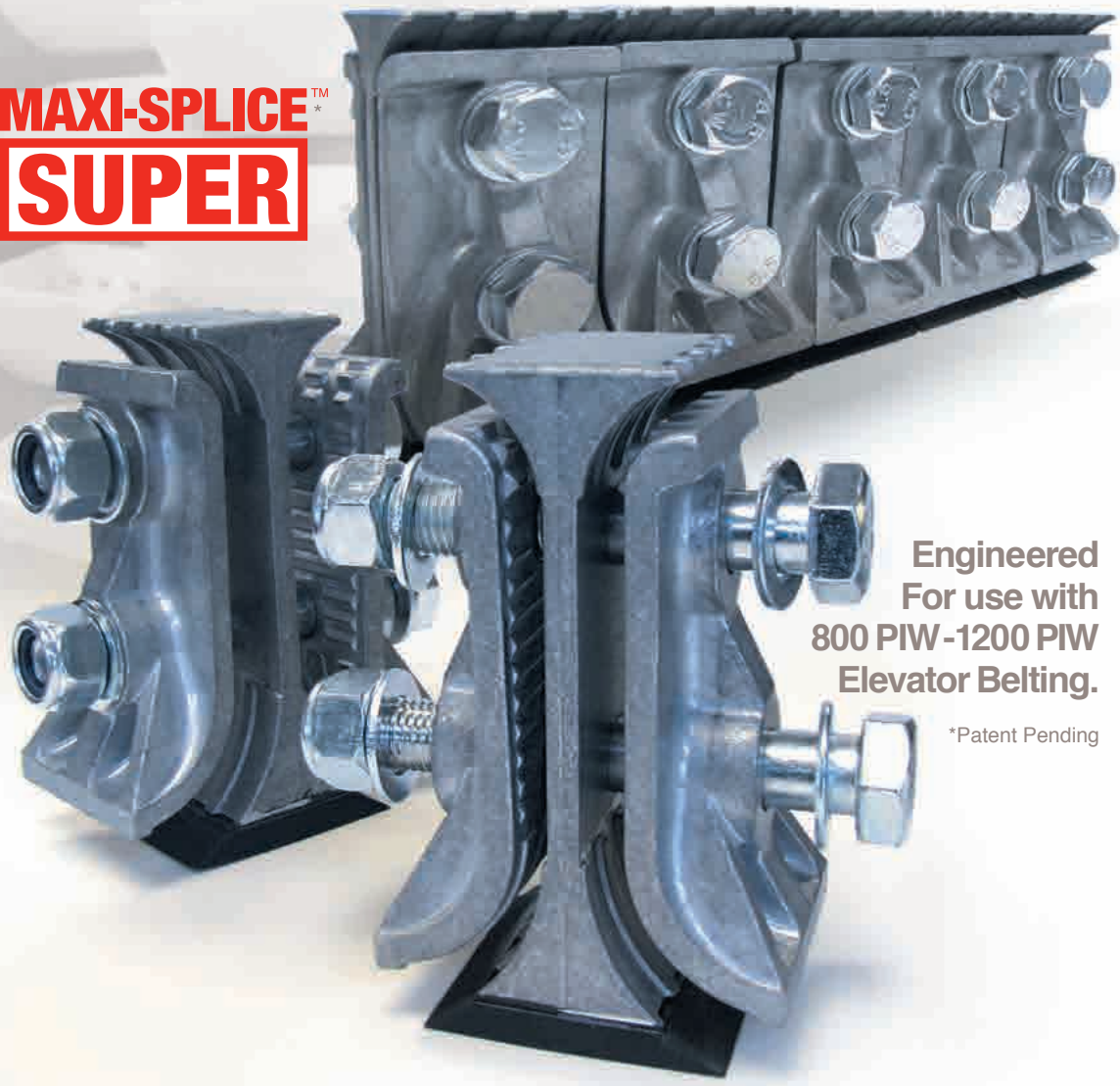


**NEW!**

# MAXI-SPLICE SUPER™

**SIMPLE. STRONG. SECURE.**

**MAXI-SPLICE™**  
**SUPER**



Engineered  
For use with  
800 PIW - 1200 PIW  
Elevator Belting.

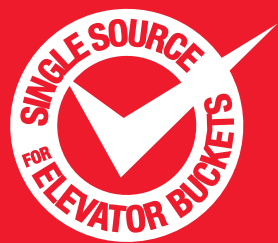
\*Patent Pending



**Maxi-Lift Inc.®**

800.527.0657  
MAXILIFT.COM

16400 Midway Rd, Addison, TX 75001 P.O. Box 700008, Dallas, TX 75370-0008 | Local 972-735-8855 | Fax 972-735-8896 | email: info@maxilift.com



# MAXI-SPLICE SUPER™

Simple. Strong. Secure.



\*Patent Pending

## MAXI-SPLICE™ SUPER

- Enhance Reliability & Safety!
- Engineered for Use with 800-1200 PIW Belting!

### MAXI-SPLICE SUPER: The Ultimate Elevator Belt Splice

Introducing the new **MAXI-SPLICE SUPER**. Designed for your demanding elevator belt applications, the **MAXI-SPLICE SUPER** has several enhancements that make it perfect for use with elevator belts rated at 800-1200 PIW. The unique design embraces our existing **MAXI-SPLICE** three piece construction, and clamps together using grade 5 bolts. The **SUPER** is constructed using a central vice-grip section bracketed by two exterior solid clamps. Utilizing clamping force and friction to secure the load. The addition of the NBR rubber wedge protects belts for long life.

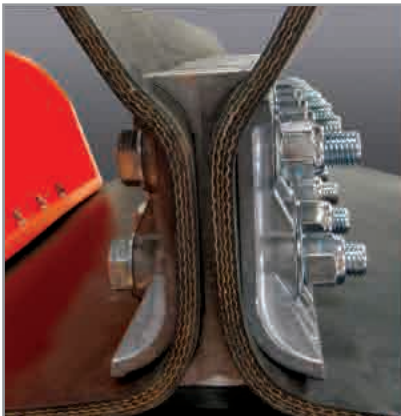
#### FEATURES & BENEFITS

- High Grade Aluminum Construction for Less Hanging Weight
- 800 to 1200 PIW Belts
- NBR Rubber Wedge Protects the Backside of Belt
- Larger Radius for Belt Protection
- Wider Surface Area (3" width) to Grip Belting and Provide Superior Holding Strength
- Non-Sparking / Corrosion Resistant
- Two Bolt Construction for Stronger Grip
- Off the Shelf for Quick Delivery
- Easy to Install

#### APPLICATIONS

- High Capacity Elevators
- Export Facilities
- Processing Plants
- River Terminals
- Wide Bucket Elevators
- Multiple Row Bucket Elevators

#### PHOTOS FROM THE FIELD



#### TECHNICAL INFO

Each Splice accommodates 3" of belt width

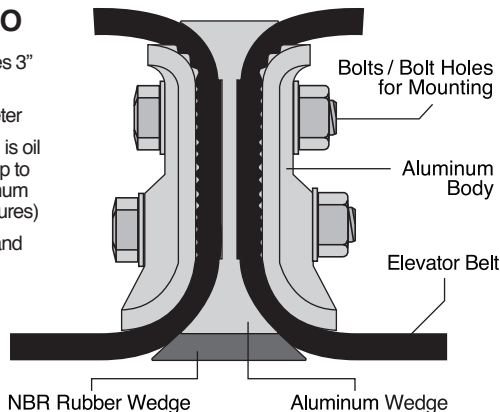
Grade 5 Bolts - 3/4" Diameter

Rubberized wedge section is oil resistant, suitable for use up to 176° F / 80° C (Use aluminum wedge for higher temperatures)

Use Super template tape and Power Punch to install (Torque 150 ft. / lbs.)

Weight: 4.8 lbs.  
Length: 6-3/4 in.  
Width: 3 in.

\*Patent Pending



#### ALSO AVAILABLE

##### MAXI-SPLICE AB (Bronze)

Non-Ferrous Metal: Very high tensile strength  
Usable on belts of up to 800 PIW tensile  
Non-sparking, non-corroding, non-rusting  
Weight: 2.9 lbs. each

##### MAXI-SPLICE CI (Silver)

Ferrous Metal: Moderately high tensile strength  
Usable on belts of up to 600 PIW tensile  
Weight: 2.6 lbs. each

## MAXI-SPLICE® BELT FASTENING SYSTEMS



**DISCLAIMER:** Failure to properly select or install any belt splice can result in splice failure and cause equipment and property failure which may also result in bodily injury or death. Proper procedures for installation **must be strictly followed**. SEE FULL DISCLAIMER ON [WWW.MAXILIFT.COM](http://WWW.MAXILIFT.COM)